

pcc (STOCK)
ship 10 pcs or less in 1-3 days



245 eisenhower lane south • lombard, illinois 60148
 630.705.1920 • 800.243.3018 • fax 630.705.1930
 www.patecurbs.com • e-mail: sales@patecurbs.com

pate (always in stock)
pipe cap packages

standard construction

pate cap packages consist of acrylic clad thermoplastic cover, graduated step boots with stainless steel clamps, and fastening screws.

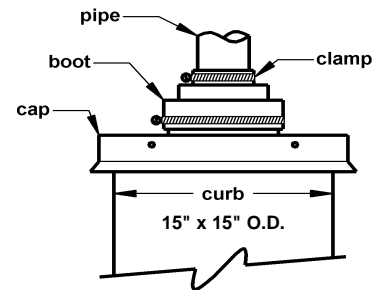
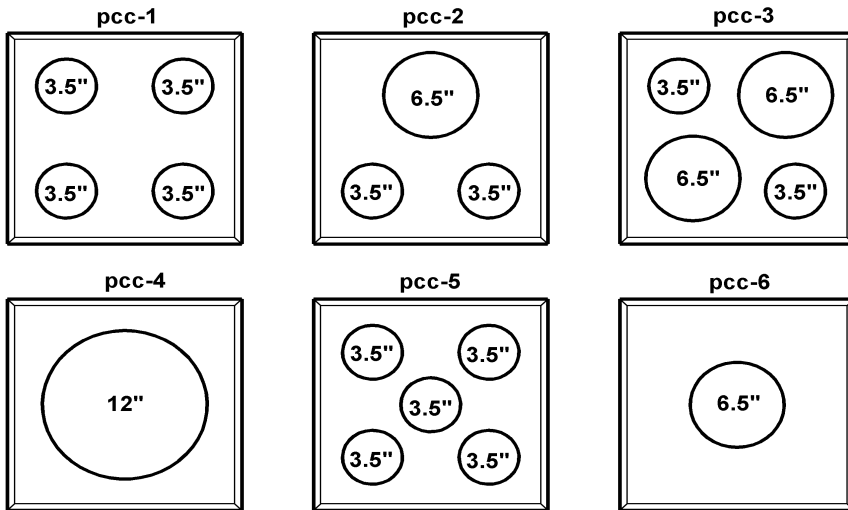
p.o. no. _____
 customer _____

 project _____
 location _____

 architect _____
 engineer _____

pate pipe curb assemblies

cap styles




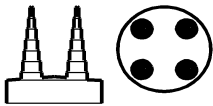
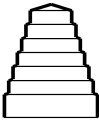
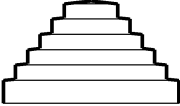
cap and boot packages

NOTE: sizes listed are actual O.D.

- pcc-1** for up to 4 pipes: 1/2" - 2 7/8" O.D.
- pcc-2** for up to 2 pipes: 1/2" - 2 7/8" O.D. and 1 pipe: 3" - 5 1/2" O.D.
- pcc-2q6** for up to 2 pipes: 1/2" - 2 7/8" O.D. and for up to 4 pipes: 3/8" - 2" O.D.
- pcc-3** for up to 2 pipes: 1/2" - 2 7/8" O.D. and for up to 2 pipes: 3" - 5 1/2" O.D.
- pcc-3q6** for up to 2 pipes: 1/2" - 2 7/8" O.D. and for up to 8 pipes: 3/8" - 2" O.D.
- pcc-4** for 1 pipe: 6" - 10 3/4" O.D.
- pcc-5** for up to 5 pipes: 1/2" - 2 7/8" O.D.
- pcc-6** for 1 pipe: 3" - 5 1/2" O.D.

Cap packages fit 15" square and 15-1/2" square OD curbs

pipe curb assembly requirements

quantity	cap package	notes	b-3	b-q6
	pcc-1 pcc-2 pcc-2q pcc-3 pcc-3q6 pcc-3 b6 q6 pcc-4 pcc-5 pcc-6 pcc-6q6		 1 module graduated step 3 1/2" boot for 1/2" - 2 7/8" actual O.D. pipe	 4 module graduated step 6 1/2" boot for 3/8" - 2" actual O.D. pipe
			 1 module graduated step 6 1/2" boot for 3" - 5" actual O.D. pipe	 1 module graduated step 12" boot for 6" - 10 3/4" actual O.D. pipe